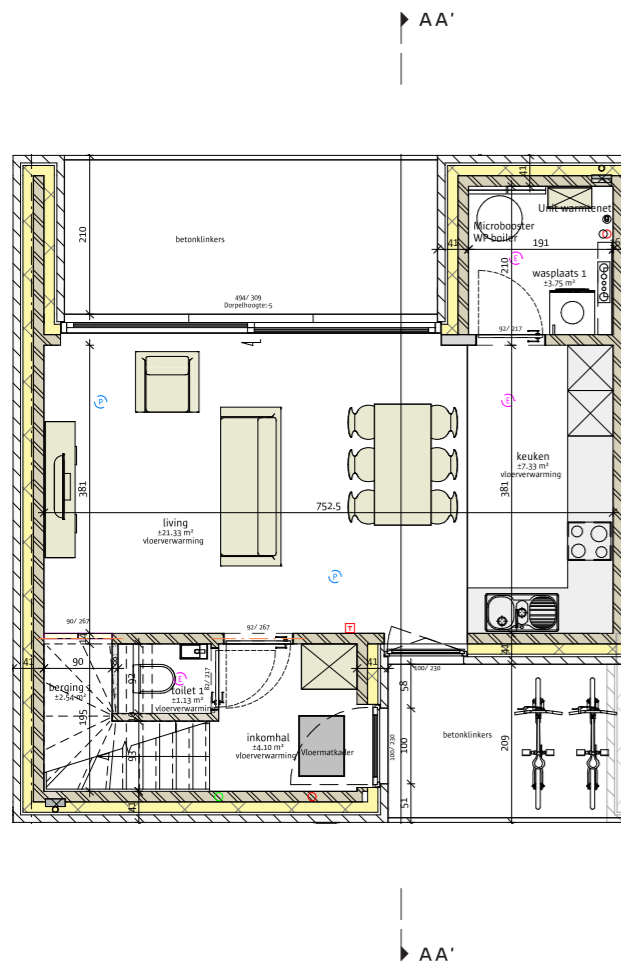
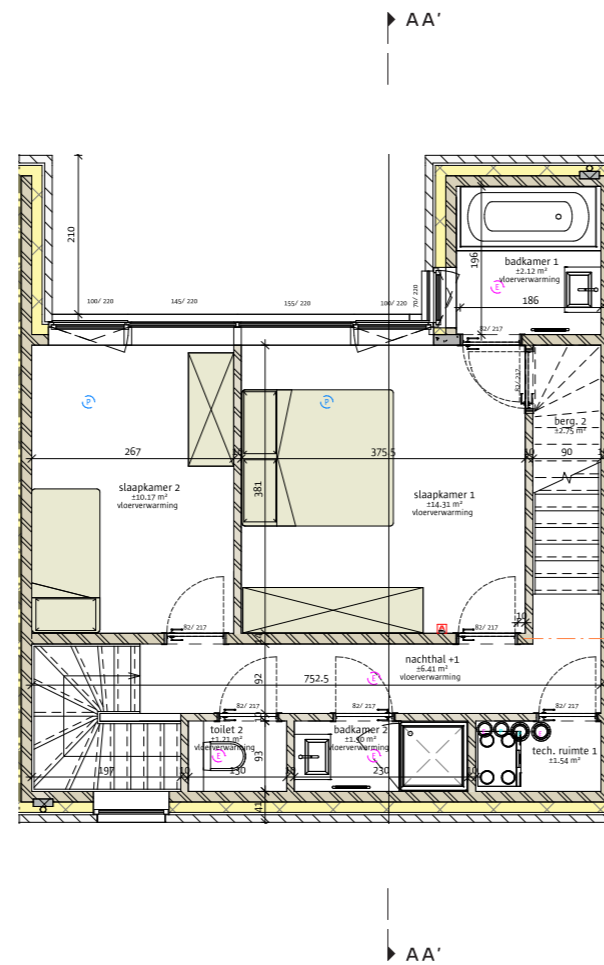


POTUIT

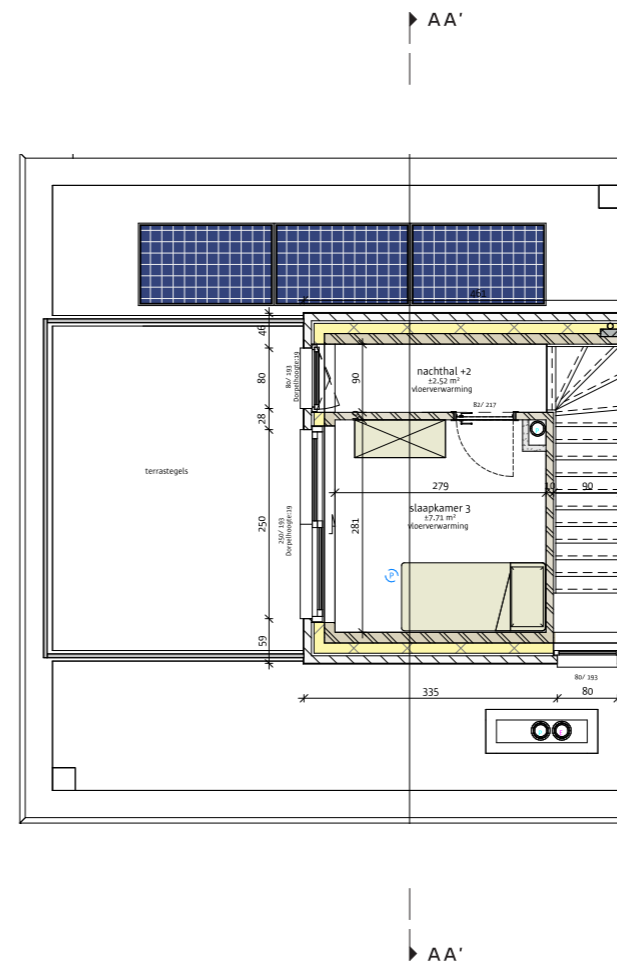
ST. AMANDSBERG



GELIJKVLOERS - 51,44 m²

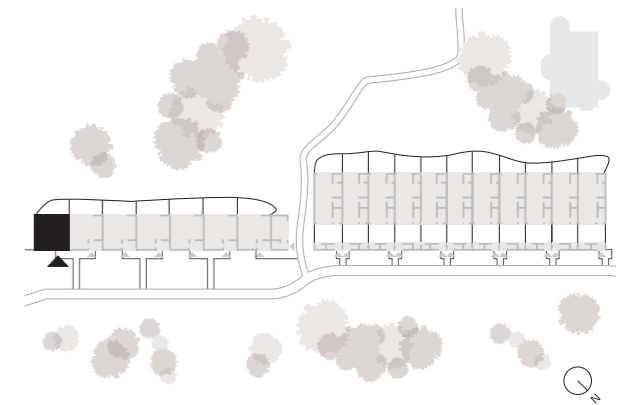


VERDIEPING 1 - 57,37 m²



VERDIEPING 2 - 21,34 m²

W01 Type 1



Schaal	1/100	Perceel opp.	71,44 m ²
Datum	09.01.2023	Woning opp.	130,15 m ²
		Terras opp.	24,77 m ²

Bouwplaats	Kadastrale gegevens
Negenmeipad 4-38 9040 Sint-Amandsberg	Afd. 19, sectie C 644P, 644S, 646G, 661N, 662T, 662W, 662X

ARCHITECT

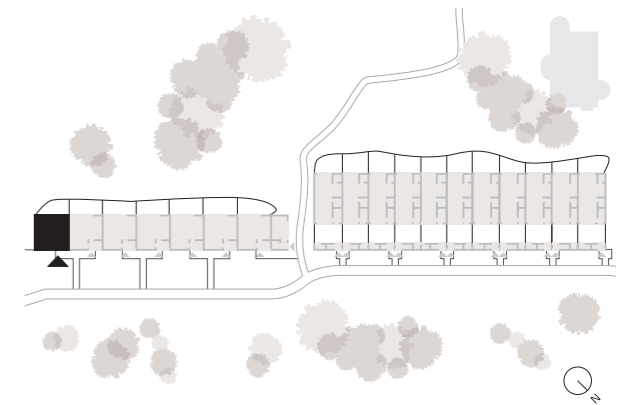
GAFPA



POTUIT

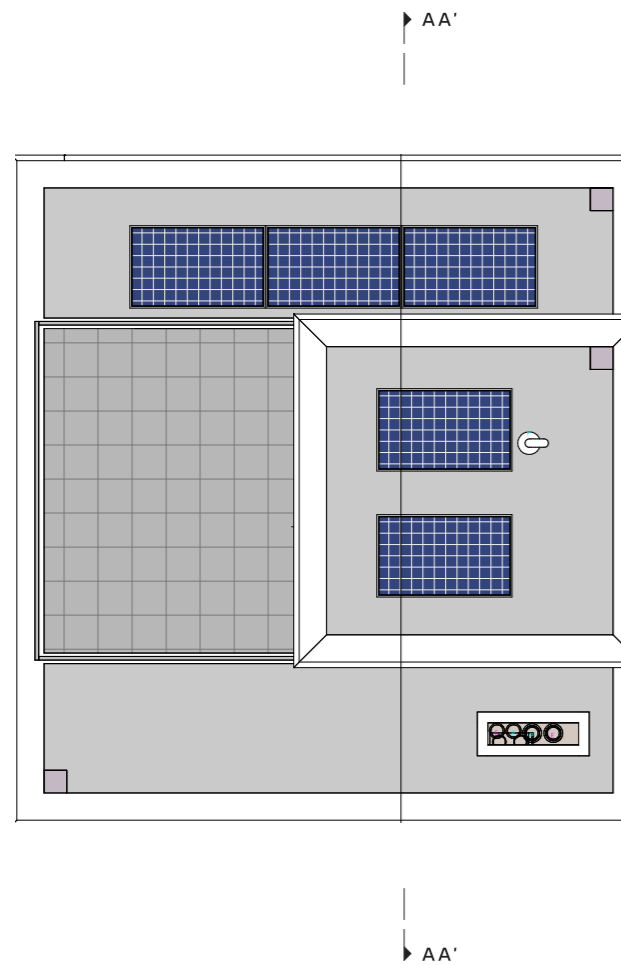
ST. AMANDSBERG

W01 Type 1

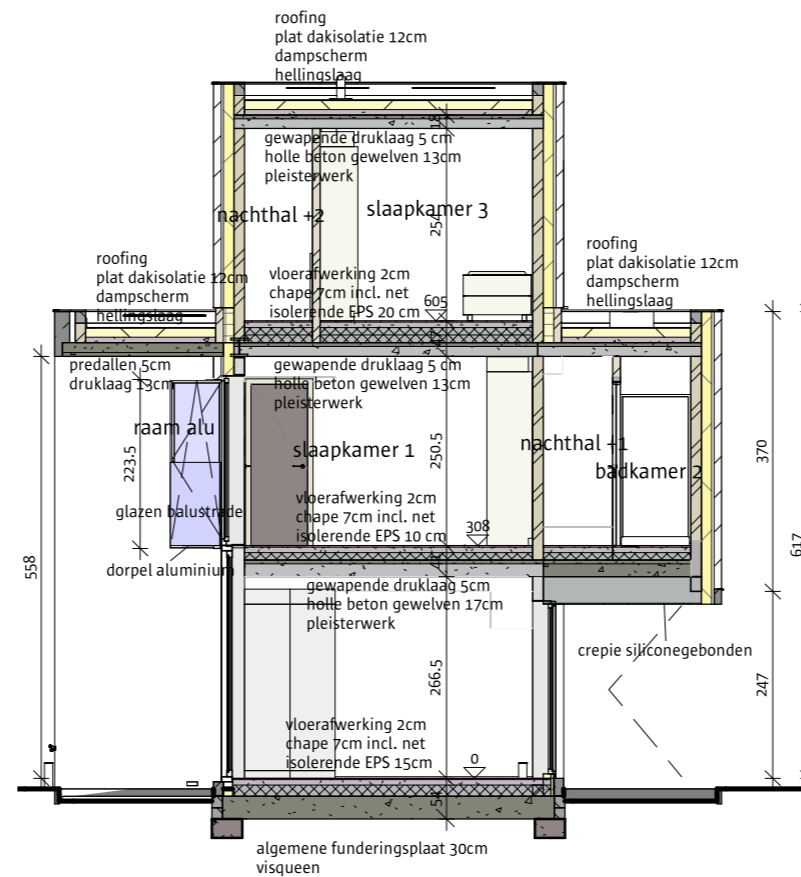


Schaal	1/100	Perceel opp.	71,44 m ²
Datum	09.01.2023	Woning opp.	130,15 m ²
		Terras opp.	24,77 m ²

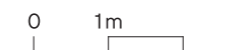
Bouwplaats	Kadastrale gegevens
Negenmeipad 4-38 9040 Sint-Amandsberg	Afd. 19, sectie C 644P, 644S, 646G, 661N, 662T, 662W, 662X



DAKENPLAN



SNEDE AA'



ARCHITECT

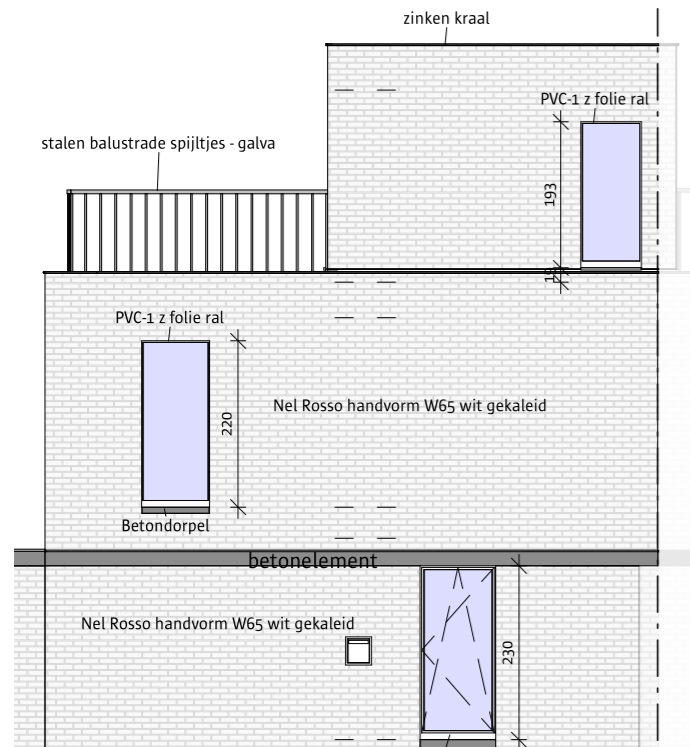
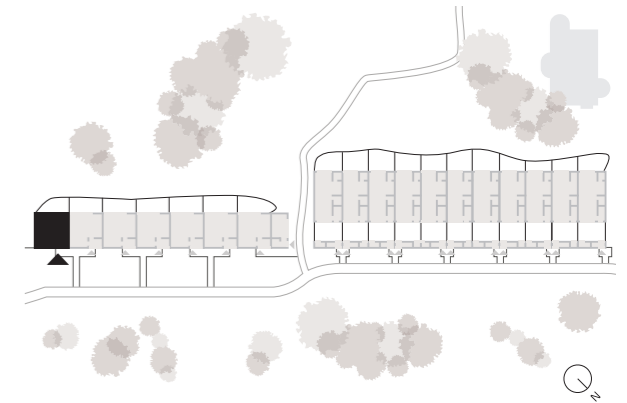
GAFPA

Het lastenboek primeert op de verkoopplannen- en tekeningen. Deze tekeningen en de maatvoering hierop is indicatief. Alle meubilair en toebehoren zijn illustratief. Aan deze tekening kunnen geen rechten worden ontleend.

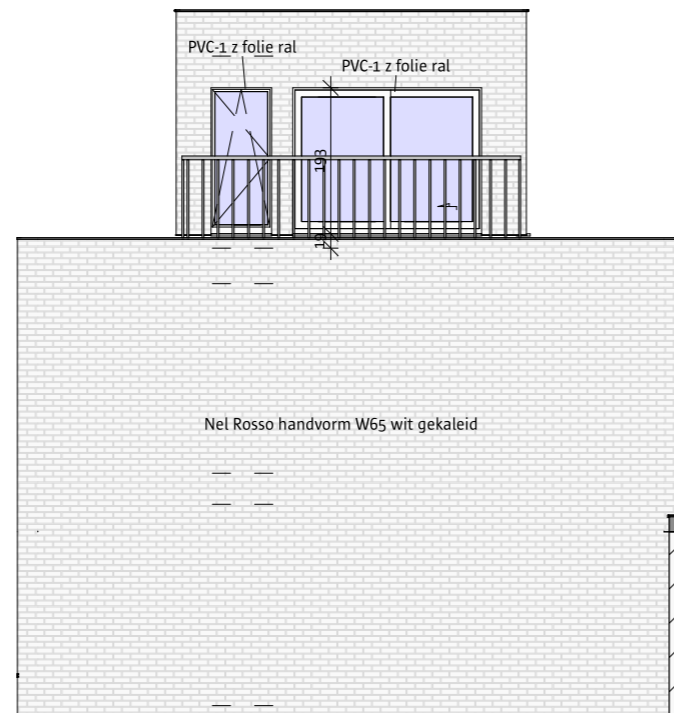
POTUIT

ST. AMANDSBERG

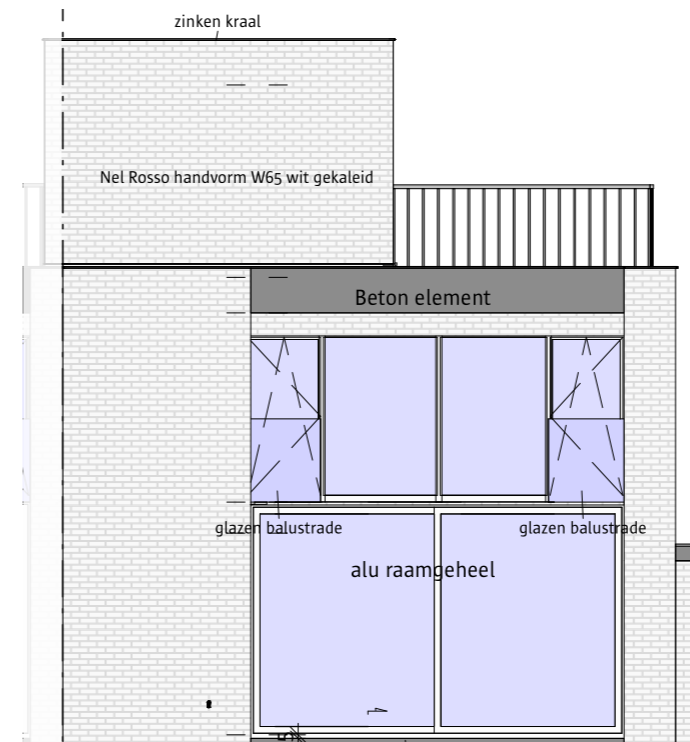
W01 Type 1



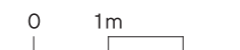
VOORGEVEL



LINKERGEVEL



ACHTERGEVEL



Schaal	1/100	Perceel opp.	71,44 m ²
Datum	09.01.2023	Woning opp.	130,15 m ²
		Terras opp.	24,77 m ²

Bouwplaats	Kadastrale gegevens
Negenmeipad 4-38 9040 Sint-Amandsberg	Afd. 19, sectie C 644P, 644S, 646G, 661N, 662T, 662W, 662X

ARCHITECT

GAFPA