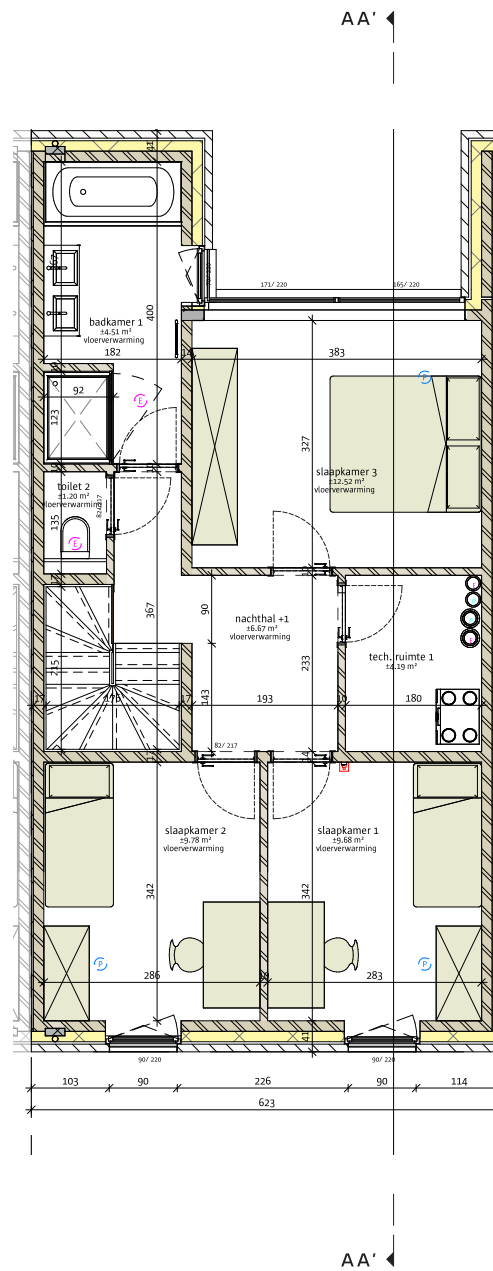
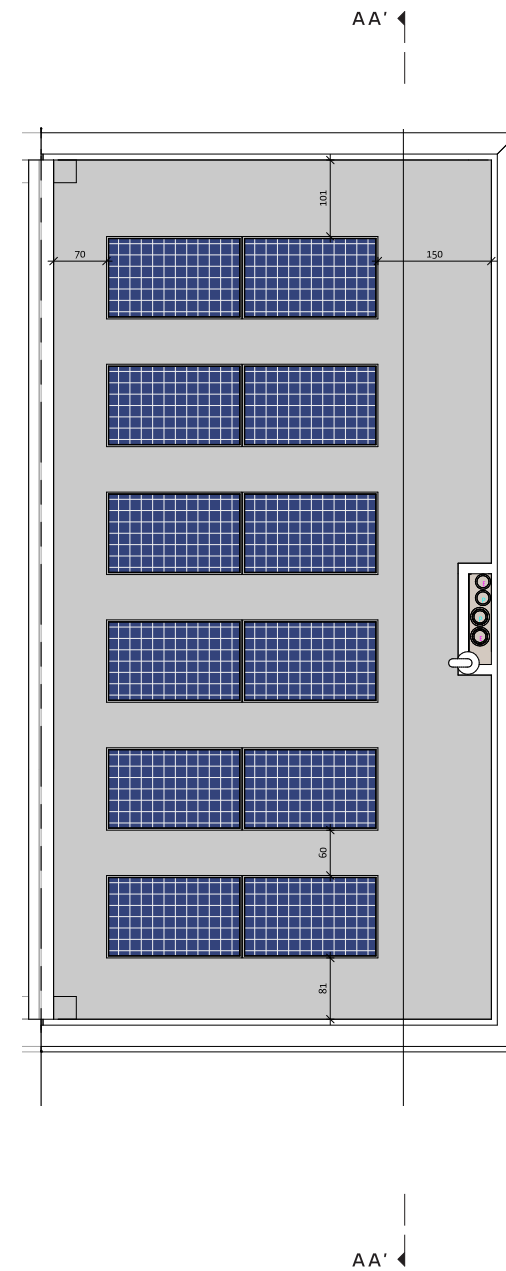


GELIJKVLOERS - 69,19 m2



VERDIEPING 1 - 69,19 m2

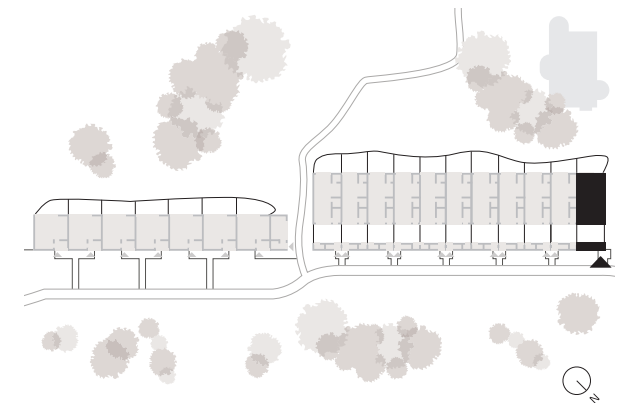


DAKENPLAN

# POTUIT

ST. AMANDSBERG

W18  
Type 3

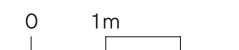


Schaal	1/100	Perceel opp.	114,57 m <sup>2</sup>
Datum	09.01.2023	Woning opp.	138,38 m <sup>2</sup>
		Terras opp.	7 m <sup>2</sup>

Bouwplaats	Kadastrale gegevens
Negenmeipad 4-38	Afd. 19, sectie C 644P, 644S, 9040 Sint-Amandsberg
	646G, 661N, 662T, 662W, 662X

ARCHITECT

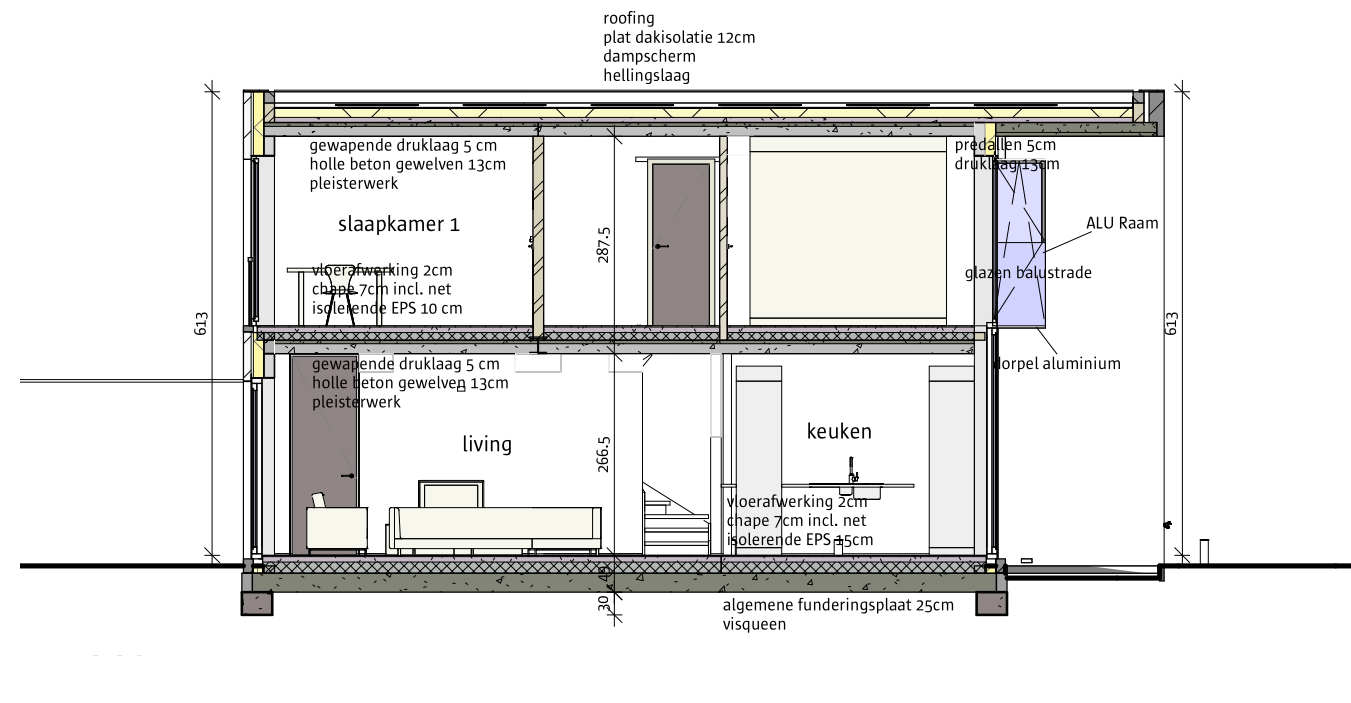
GAFPA



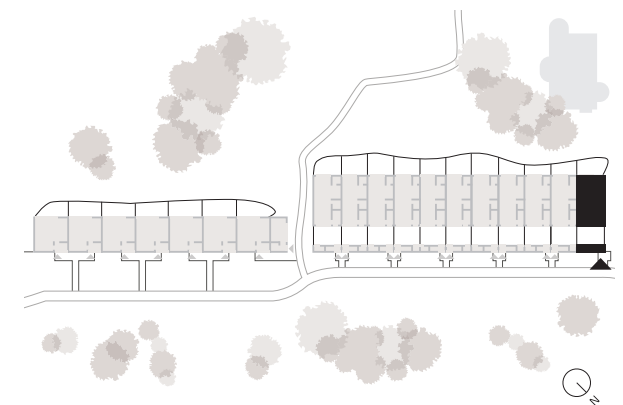
# POTUIT

ST. AMANDSBERG

## W18 Type 3



SNEDE AA'

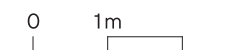


Schaal	1/100	Perceel opp.	114,57 m <sup>2</sup>
Datum	09.01.2023	Woning opp.	138,38 m <sup>2</sup>
		Terras opp.	7 m <sup>2</sup>

Bouwplaats	Kadastrale gegevens
Negenmeipad 4-38 9040 Sint-Amandsberg	Afd. 19, sectie C 644P, 644S, 646G, 661N, 662T, 662W, 662X

ARCHITECT

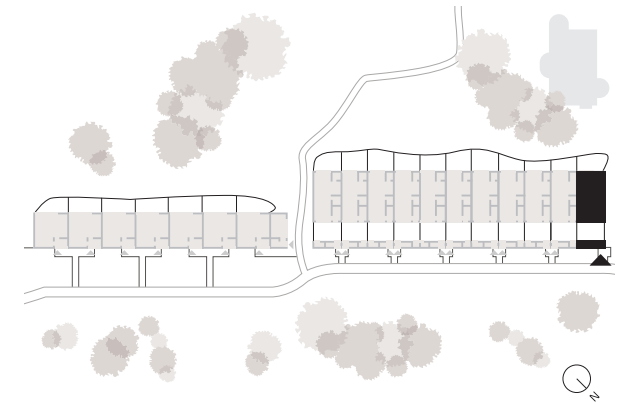
## GAFPA



# POTUIT

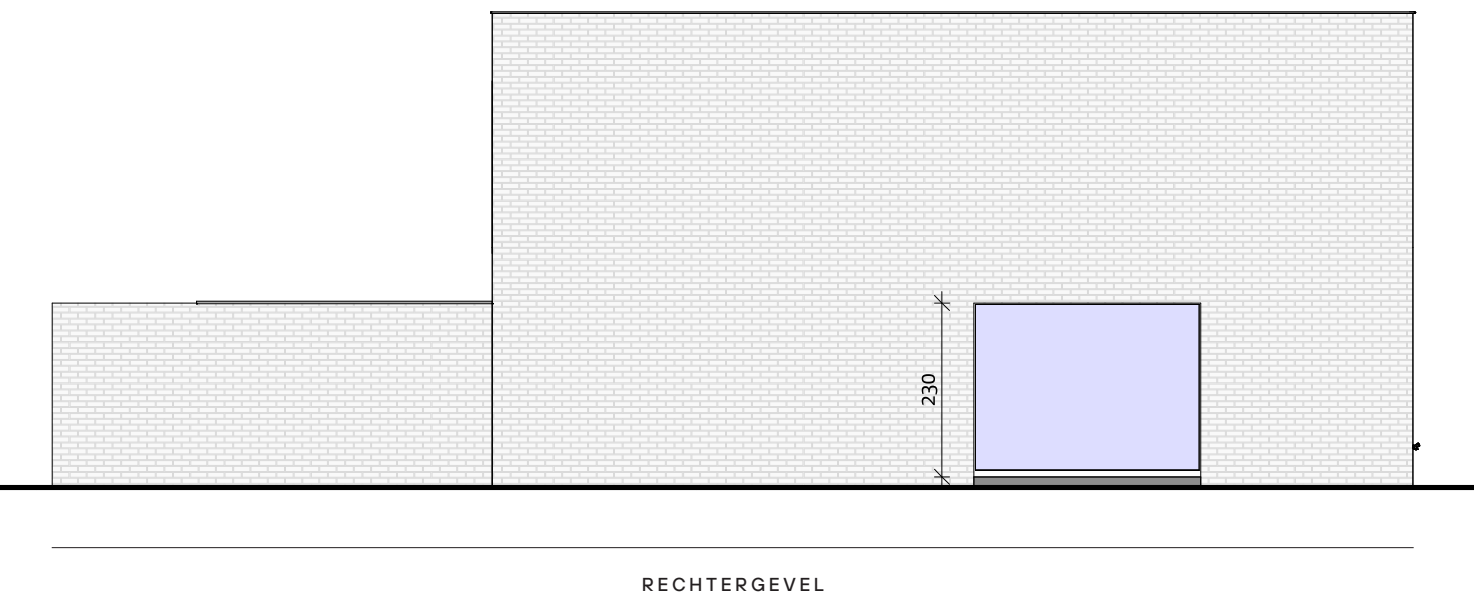
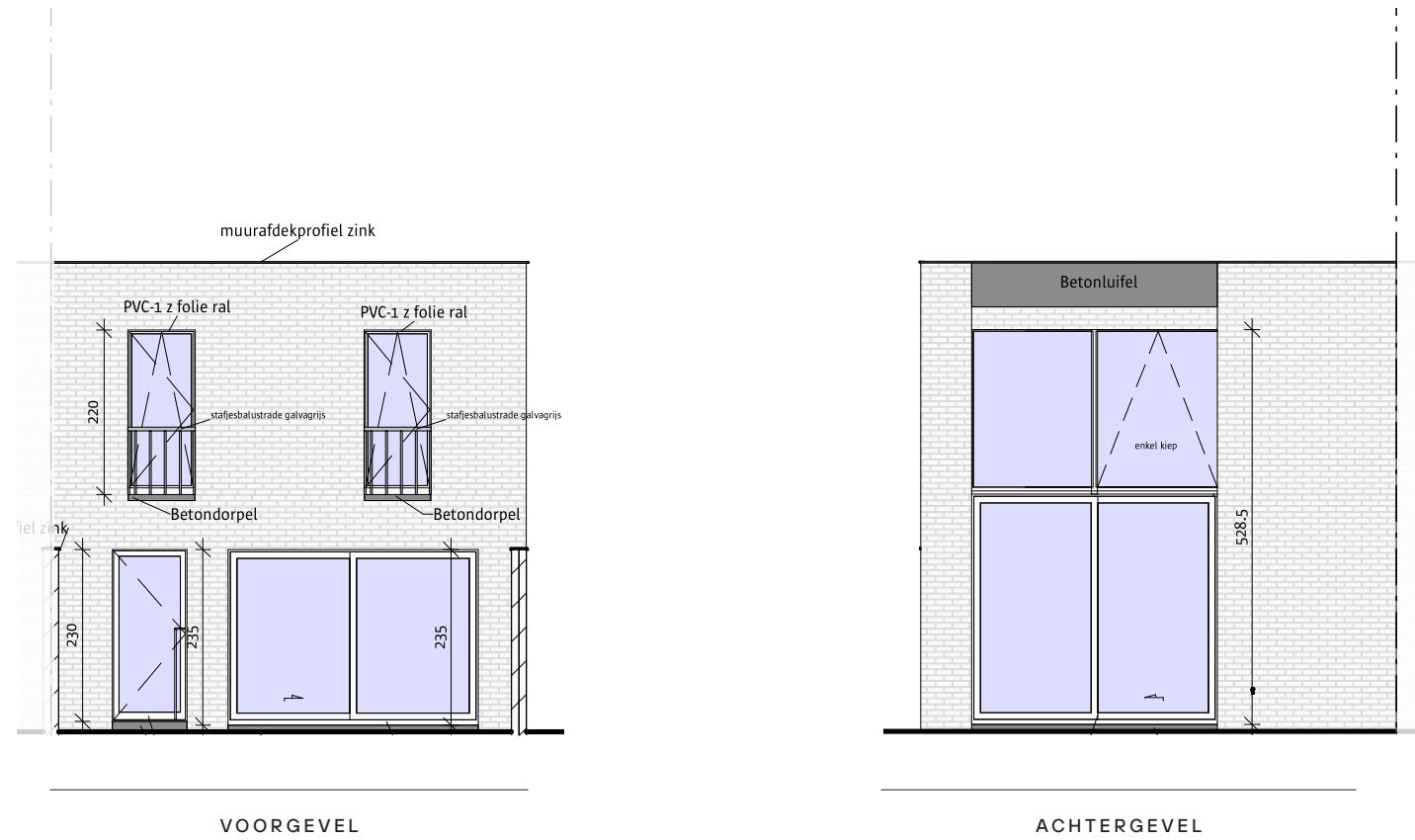
ST. AMANDSBERG

## W18 Type 3



Schaal	1/100	Perceel opp.	114,57 m <sup>2</sup>
Datum	09.01.2023	Woning opp.	138,38 m <sup>2</sup>
		Terras opp.	7 m <sup>2</sup>

Bouwplaats	Kadastrale gegevens
Negenmeipad 4-38 9040 Sint-Amandsberg	Afd. 19, sectie C 644P, 644S, 646G, 661N, 662T, 662W, 662X



ARCHITECT

## GAFPA